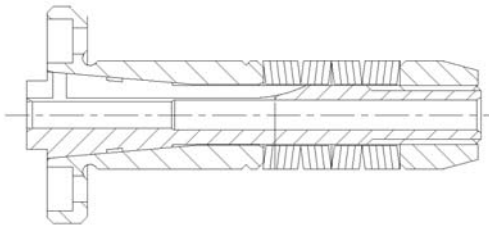
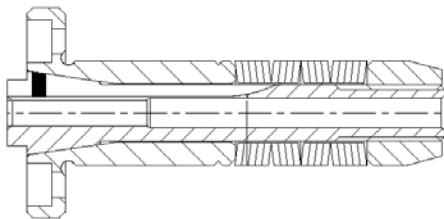


## Westwind Collets

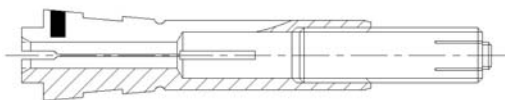
Westwind manufacture and supply spare collets, precision matched to the spindle. Using genuine Westwind collets in your spindles will enhance their performance and extend their working life.



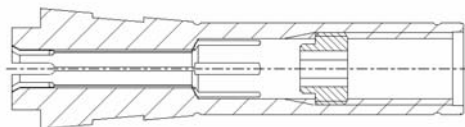
Collet : 08085A1 collet cartridge  
 Type : 1/8" Cartridge  
 Used on : **M320-24**  
 Tool kit : Not applicable



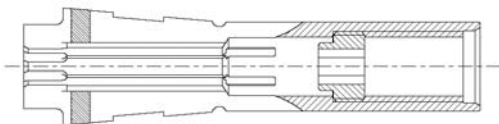
Collet : 11257 collet cartridge  
 Type : 1/8" Cartridge  
 Used on : **D1519-01;**  
**M320-01,03,05,07,10,11,16,17,**  
**18,19,20,22,23,27,28,29,30,36, 47,52**  
 Tool kit : Not applicable



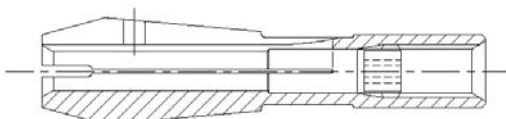
Collet : 16194 rugged  
 Type : 1/8" Positive lock  
 Used on : **M320-38,43,55**  
 Tool kit : 44429 (6 jaw positive lock)



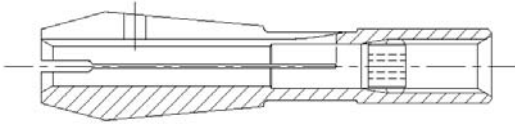
Collet : 16703 rugged  
 Type : 1/8" Dead stop  
 Used on : **D1170-04;**  
**D1303-01,02;**  
**D1524-01,02,03,04,05;**  
**M320-46,50,62, 63,64,65,66**  
 Tool kit : 48454 (6 jaw dead stop)



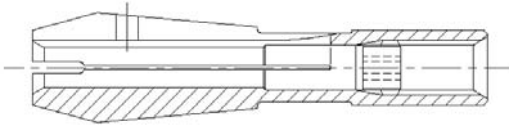
Collet : 17508 rugged  
 Type : 1/8" Positive lock  
 Used on : **D1251-03**  
 Tool kit : 44429 (6 jaw positive lock)



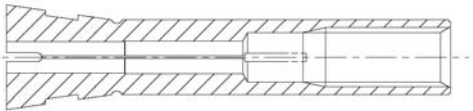
Collet : 17593 standard  
 Type : 1/8" Positive lock  
 Used on : **D1201-02,06,20,21,33;**  
**D1263-03,04,06,07,09;**  
**D1331-01,02,03,07,08,09,10,13,**  
**17,19,20,21,24,27,28,38;**  
**D1404-01;**  
**D1502-01;**  
**D1531-06,09;**  
**D1686-01,02,03,04**  
 Tool kit : 44475 (4 jaw positive lock)



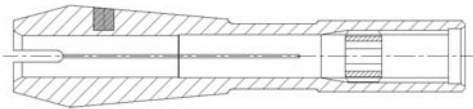
Collet : 17809 standard  
Type : 1/8" Positive lock  
Used on : **D1199**-03,04,05;  
**D1473**-01,05  
Tool kit : 44475 (4 jaw positive lock)



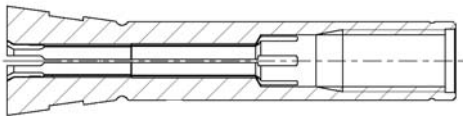
Collet : 17809/2 standard  
Type : 1/8" Positive lock  
Used on : **D1199**-03,04,05;  
**D1473**-01,05  
Tool kit : 44475 (4 jaw positive lock)



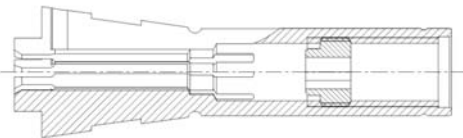
Collet : 34381 rugged  
Type : 1/8" Positive lock  
Used on : **D1331**-26,29,31  
Tool kit : 44429 (6 jaw positive lock)



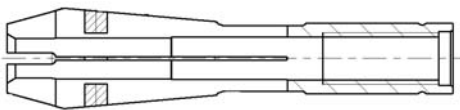
Collet : 37462 standard  
Type : 1/8" Dead stop  
Used on : **D1331**-30,32,41,42,44;  
**D1531**-08  
Tool kit : 44428 (4 jaw dead stop)



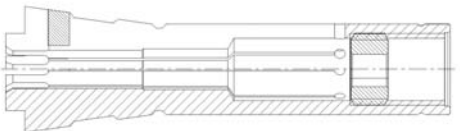
Collet : 38730 rugged  
Type : 1/8" Dead stop  
Used on : **D1331**-36  
Tool kit : 44430 (6 jaw dead stop)



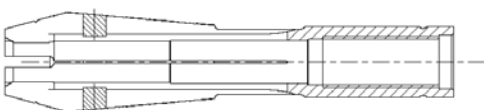
Collet : 39773 rugged  
Type : 1/8" Dead stop  
Used on : **M320**-64C  
Tool kit : 48454 (6 jaw dead stop)



Collet : 40374 standard  
Type : 1/8" Dead stop  
Used on : **D1686**-10,11,12,15  
Tool kit : 44428 (4 jaw dead stop)



Collet : 41611 rugged  
Type : 1/8" Dead stop  
Used on : **D1331**-48, 49, 51  
Tool kit : 48454 (6 jaw dead stop)



Collet : 41844 standard  
Type : 1/8" Dead stop  
Used on : **D1199**-06,10;  
**D1473**-07  
Tool kit : 44428 (4 jaw dead stop)